



Royal Entomological Society

Insect Week



# WHAT IS AN INSECT?

## SPOT & SORT

### DISCOVER WHAT AN INSECT IS

INSECTS HAVE:

**6 LEGS**

Most insects have six legs



INSECTS HAVE:

**3 BODY PARTS**

Head, thorax and abdomen



INSECTS HAVE:

**OFTEN WINGS**

Many insects have wings, but not all



INSECTS ARE AMAZING ANIMALS!  
THEY COME IN LOTS OF SHAPES,  
SIZES AND COLOURS.

### WHAT IS NOT AN INSECT

SPIDERS  
8 legs



SNAILS  
No legs



These animals are not insects.

MILLIPEDES  
Many legs



WORMS  
No legs



WOODLOUSE  
14 legs



### OBSERVE

What can you find?  
Look closely in your school, park or garden.  
How many insects can you spot?

### PROTECT

One simple action  
Insects need our help.  
Leave a wild corner with long grass and flowers for insects to live and find food.



YOU COULD BE AN INSECT SCIENTIST!



### SHARE YOUR DISCOVERIES

Count how many insects you have found and tell your friends about them!

Scan the QR code for more information about Insect Week and the Royal Entomological Society!  
[royensoc.co.uk/insectweek](http://royensoc.co.uk/insectweek)



Stand Tall

Small



# WHAT IS AN INSECT?

## CUT & SORT

CUT OUT THE PICTURE BELOW  
SORT THEM INTO GROUPS

### INSECTS



6 legs and 3 body parts

### NOT INSECTS



Not 6 legs and  
not 3 body parts

LADYBIRD



SPIDER



BUMBLEBEE



SNAIL



BUTTERFLY



EARTHWORM



GRASSHOPPER



BEETLE



WOODLOUSE



HOVERFLY



ANT

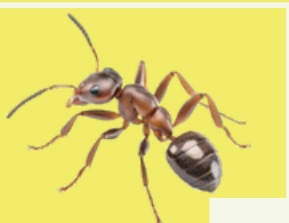


CENTIPEDE



### WHAT CAN YOU SPOT?

Tick the insects you can see in your school or garden



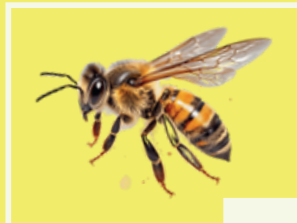
ANT



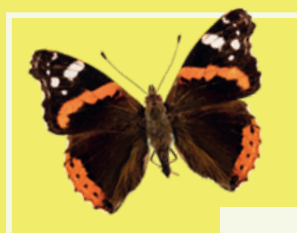
LADYBIRD



BUMBLEBEE



HONEY BEE



BUTTERFLY



HOVERFLY



WASP



BEETLE



EARWIG



CATERPILLAR



APHID



GRASSHOPPER

### HOW MANY DID YOU SEE?

Draw or write your numbers

ANTS

BUTTERFLIES

BEEES

LADYBIRDS