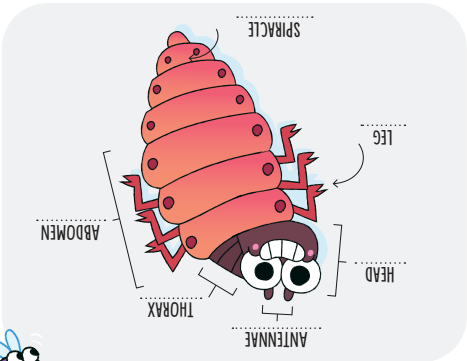
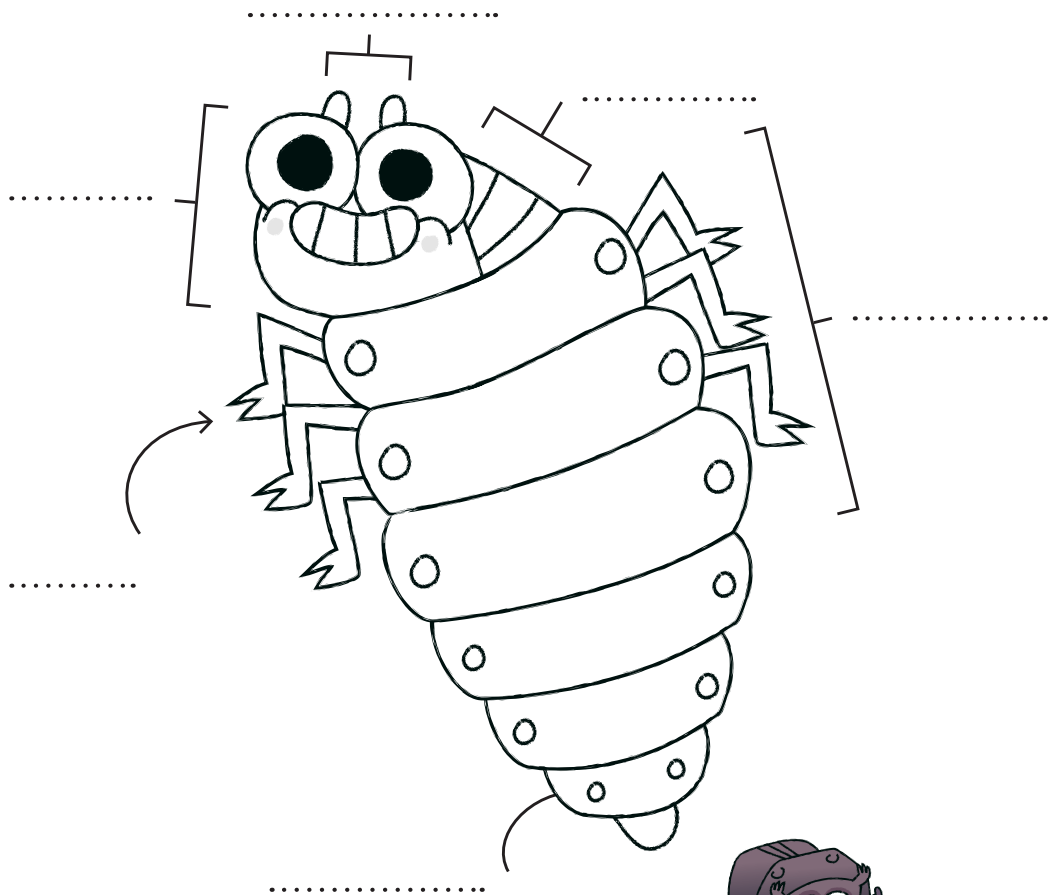


WHAT IS A DUNG BEETLE?

Can you tell the difference between a larva and an adult dung beetle? Have a go at colouring and labelling this larva first.

- HEAD
- ANTENNAE
- SPIRACLE
- ABDOMEN
- LEG
- THORAX



ANSWER:

DUNG BEETLE DIFFERENCES
 SOME DUNG BEETLE SPECIES ARE AS SMALL AS 5 MILLIMETRES LONG, WHILE THE BIGGEST SPECIES CAN REACH A CHUNKY 5 CENTIMETRES LONG.



Royal Entomological Society

@royentsoc
 @dkbooks
 www.dk.com

Content inspired by *How to be a Dung Beetle*

