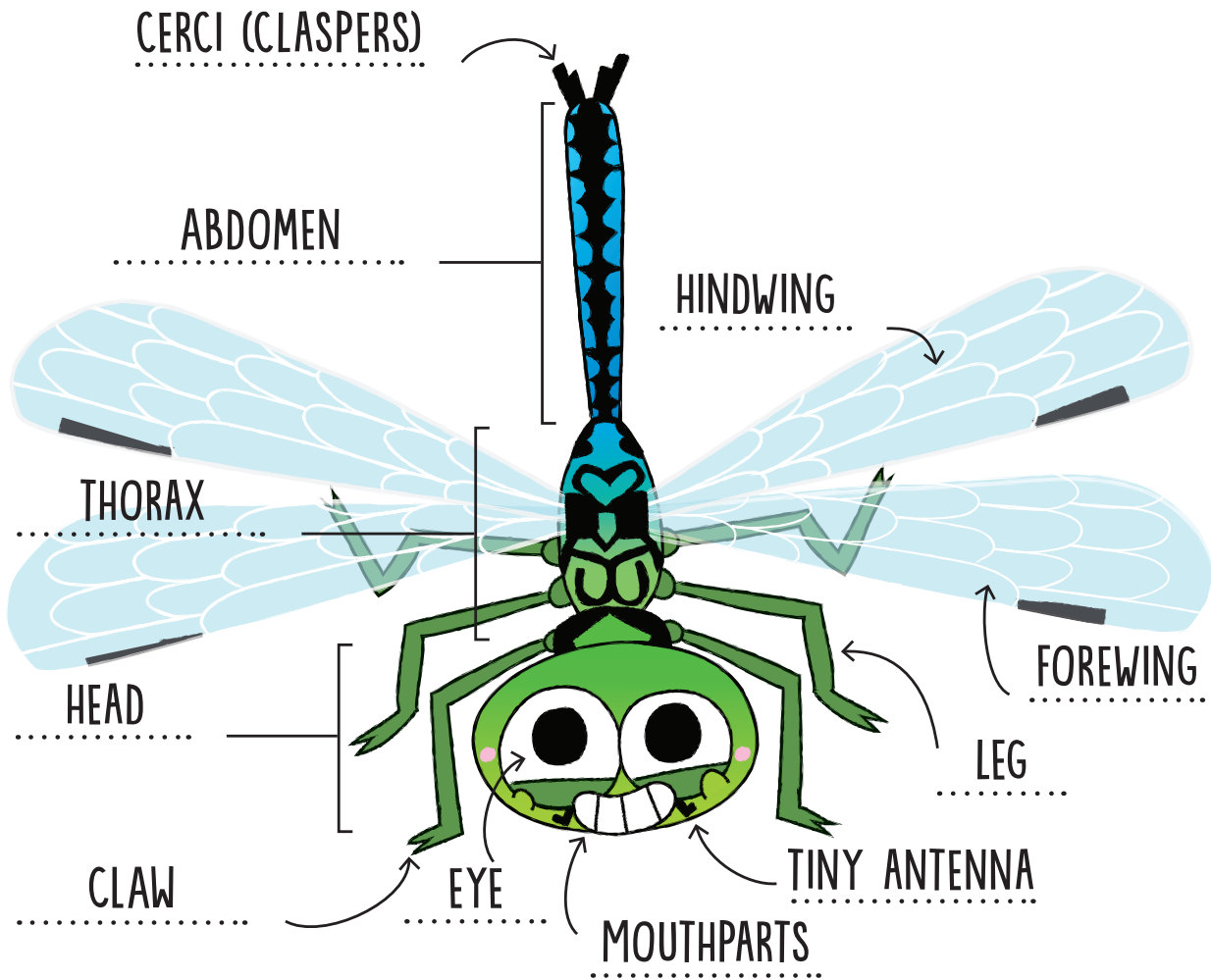
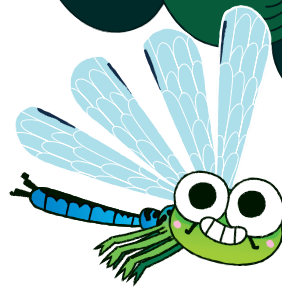


# MATCH THE PARTS

Ready to be a dragonfly detective? use your keen "eye" to label each body part to the correct spot on the diagram below. When you finish, you'll be a real dragonfly expert!



MOUTHPARTS  
TINY ANTENNA  
HINDWING  
LEG

EYE  
HEAD  
CERCI (CLASPERS)  
THORAX

CLAW  
ABDOMEN  
FOREWING



Royal Entomological Society

@royentsoc  
@dkbooks  
www.dk.com

Content taken from  
*How to be a Dragonfly*

