

IT'S National Insect Week SO TIME FOR SOME garden entomology

HERE ARE SOME BEETLES YOU MAY FIND IN YOUR GARDEN...



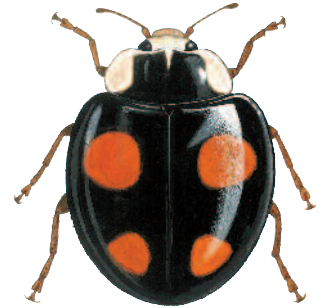
Seven-spot Ladybird larvae
Coccinella 7-punctata
(11 mm)



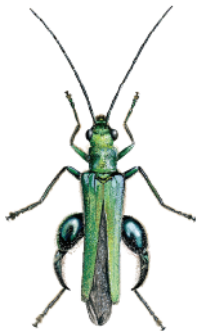
Twentytwo-spot Ladybird
Thea 22-punctata
(5 mm)



Harlequin Ladybird
Harmonia axyridis
(8 mm)



Seven-spot Ladybird
Coccinella 7-punctata
(7 mm)



Flower Beetle
Oedemera nobilis
(8 mm)



Pollen Beetle
Meligethes aeneus
(3-4 mm)

Beetles (Coleoptera) are a very diverse group of insects. They come in many different sizes, shapes and colours. There are over 4000 different species of beetles in Britain and Ireland.

Ladybirds (Family Coccinellidae) are a type of beetle. Seven-spot and Harlequin Ladybirds eat aphids, so look out for them on garden plants like roses. Twentytwo-spot Ladybirds feed on mildew, so cow parsley and hogweed are a good place to search.

Look closely at the flower heads of dandelions and thistles for Flower Beetles and tiny Pollen Beetles.

Ground Beetles (Family Carabidae) and Rove Beetles (Staphylinidae) are predators. They hunt for slugs and other small invertebrates. You may find them among the grass under pots and stones.



Rove Beetle
Philonthus marginatus
(22 mm)



Ground Beetle
Pterostichus melanarius
(30 mm)



LITTLE THINGS
THAT RUN THE WORLD

Find out more about insects at:
nationalinsectweek.co.uk

FSC has a wide range of guides to help you find out more about wildlife:
field-studies-council.org/publications

